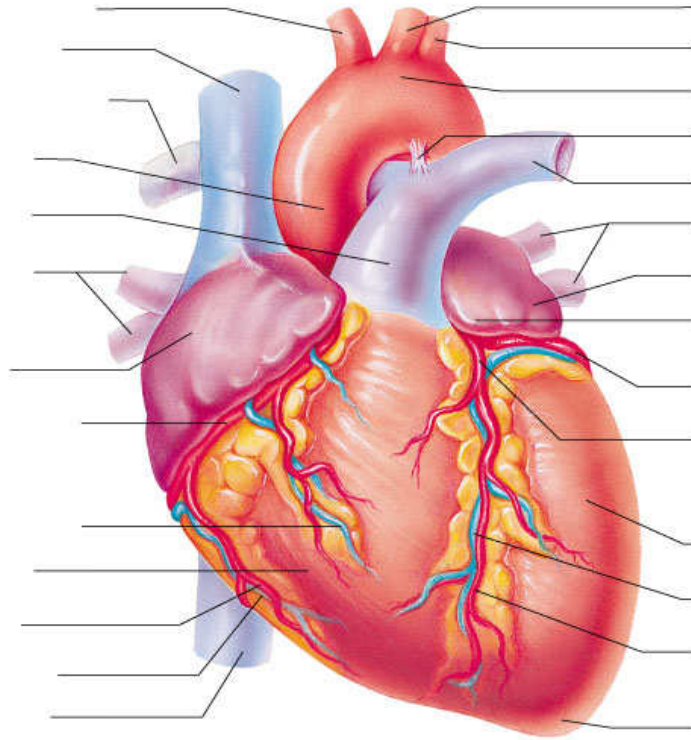


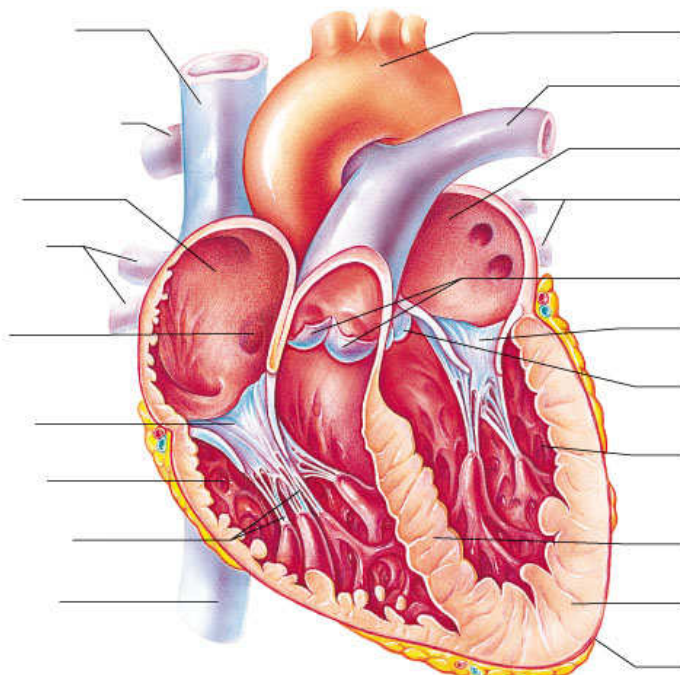
Heart Anatomy Practice Quiz External Anatomy



(a)

Copyright © 2003 Pearson Education, Inc., publishing as Benjamin Cummings.

Internal Anatomy



(b)

Copyright © 2003 Pearson Education, Inc., publishing as Benjamin Cummings.

Using arrows in the diagram, indicate the direction of blood flow through the four different chambers and all of the vessels. Also include the labels “to _____” or “from _____” by the vessels indicating where the blood is going to/coming from. Use red arrows to show oxygenated blood and blue arrows to show deoxygenated blood.

