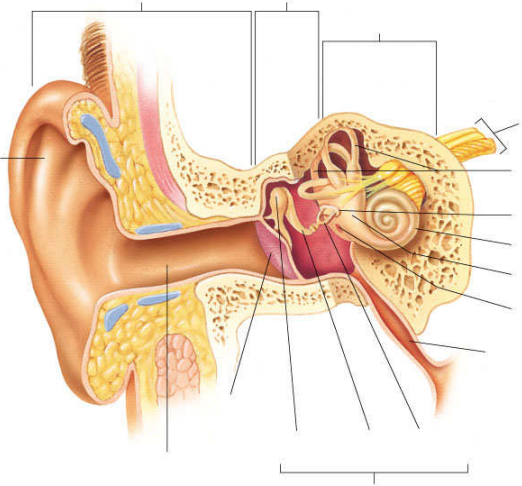


Other Special Senses

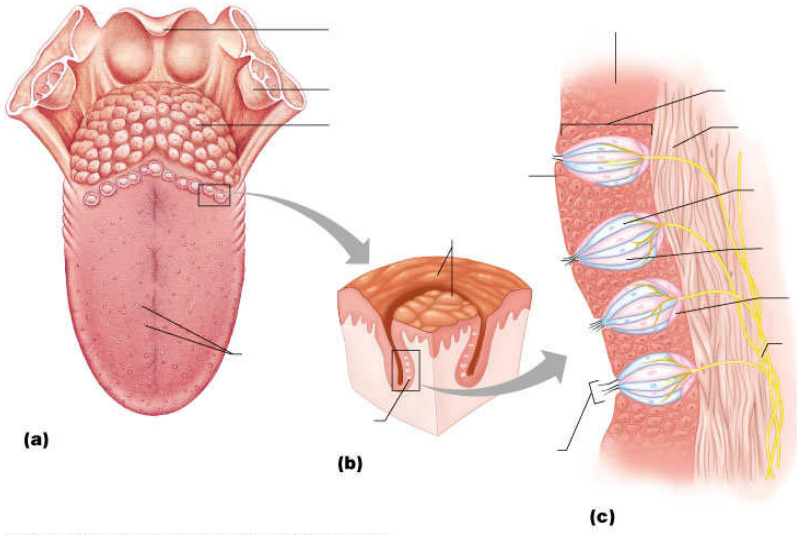
Hearing

Anatomy of the Ear	 <p style="text-align: center; font-size: small;">Copyright © 2003 Pearson Education, Inc., publishing as Benjamin Cummings.</p>
Auditory Tube	
Auricle	
Ceruminous glands	
Cochlea	
Equilibrium	
External Auditory Canal	
Ossicles	<p>Hammer</p> <p>Anvil</p> <p>Stirrup</p>
Perilymph	
Tympanic Membrane	

Compare and contrast the middle ear and the inner ear.

Sound waves hitting the eardrum set it into motion. Trace the pathway of vibrations from the eardrum to the organ of Corti, where the hair cells are stimulated.

Taste

<p>Anatomy of the Tongue</p>	 <p>The diagram illustrates the anatomy of the tongue in three parts: (a) shows the tongue with various papillae and taste buds; (b) shows a cross-section of a taste bud; (c) shows a detailed view of the taste bud with gustatory cells and their associated nerve fibers. Arrows indicate the pathway from the tongue surface to the taste buds and then to the gustatory cells.</p> <p><small>Copyright © 2003 Pearson Education, Inc., publishing as Benjamin Cummings.</small></p>
<p>Taste Buds</p>	
<p>Papillae</p>	
<p>Gustatory Cells</p>	

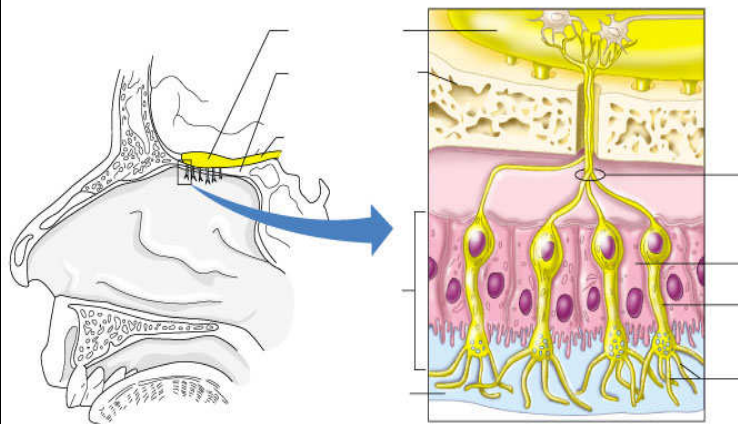
The Four Taste Sensations

Explain how taste likes and dislikes have homeostatic value.

Explain how smell, texture, and temperature can affect taste.

Smell

Anatomy of the Olfactory Receptors



Copyright © 2003 Pearson Education, Inc., publishing as Benjamin Cummings.

Olfactory Receptor Cells	
Olfactory Filament	
Olfactory Nerve	
Anosmias	

Where are the olfactory receptors located, and why is that site poorly suited for their job?

What common name is used to describe both the taste and the olfactory receptors and why?
